

***Welcome.
Our presentation will start shortly.***

***ASK ME ANYTHING:
SEAWOLF SUMMER SUCCESS SERIES***



NOMA Nation Orientation
Sonoma State University



***ASK ME ANYTHING:
SEAWOLF SUMMER SUCCESS SERIES***

Culinary Services and REACH



NOMA Nation Orientation
Sonoma State University



Residential Education & Campus Housing (REACH)



NOMA Nation Orientation
Sonoma State University



REACH INFORMATION

Office: Located on 3rd Floor of the Student Center (new location)

Hours of Operation: Monday-Friday 8:00 am - 5:00 pm

Email: housing@sonoma.edu

Phone Number: 707-664-2541



NOMA Nation Orientation
Sonoma State University

REACH TEAM

Resident Advisor (RA): Student staff person who lives in the residential community with you

Area Coordinators (AC): Professional full time staff member (with a Master's Degree) who lives and works in the residential community

Associate Directors (AD): Oversee Area Coordinators and Office Staff

Office Staff: Professional and student staff who work in the office to assist with a number of tasks including administrative work and temporary lock outs



THINGS TO THINK ABOUT...

- 9 month agreement (binding contract for the duration of the contract)
- Know the financial commitment BEFORE moving on to campus
- First year students are required to have the Seawolf All Access Meal Plan
- Move-in Day (Thursday, August 15th at the Green Music Center)

REACH Rates:



NOMA Nation Orientation
Sonoma State University





Building Community:

- Transitioning
- Roommates
- Independence
- Policies and Regulations



Talk with Your Student About:

- How they are going to build relationships
 - Our policies and regulations
 - Alcohol and Drugs
 - Social Media
 - How they are going to get connected
- 
- 





Things we would like you to know as parents...

- We can always take in information but we will not always be able to share information back (our goal is to partner with you to get your student the support they need)
- FERPA (Family Educational Rights and Privacy Act)
- Please remember there are always multiple sides to a story and sometimes we only see a small piece or one side
- We ask that you call the REACH Office for support - please do not call the RAs



What we provide...

- Xfinity Streaming
- Wifi
- Two pools and spas on campus
- Laundry costs included
- Utilities (Electricity, Water, Garbage)
- Dining venues
- Centralized mail room
- Community events in the residential community
- Student Staff (RAs)
- Live-In professional staff (Master's qualified)

What to bring and what should stay away...



BRING A FAN (or 2)!!
We don't have air conditioning.



NOMA Nation Orientation
Sonoma State University

Hello!

Lauren Antoni
Director
Culinary Services

Talking About:

- Where to Eat
- Meal Plans



NOMA Nation Orientation
Sonoma State University

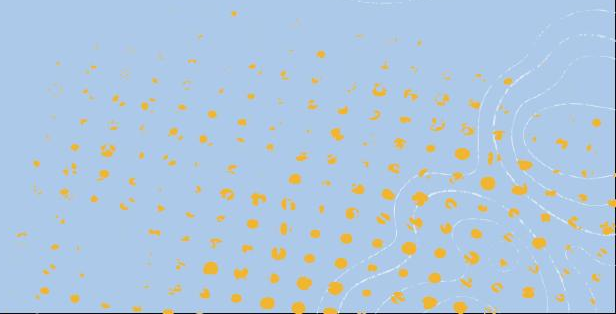


Where to Eat

Venues open in Fall 2024



NOMA Nation Orientation
Sonoma State University



The Kitchens

The main dining hall, with plenty of options and an all-you-care-to-eat experience!

Rotating menu with options for everyone!
Menu is on culinary.sonoma.edu

Themed meals



NOMA Nation Orientation
Sonoma State University

The Kitchens

New Hours Fall 2024

Monday-Thursday: 7:30am - 9:30pm
New Takeaway Program 8:30pm-9:30pm

Friday: 8am-8pm

Saturday/Sunday: 9am-8pm



NOMA Nation Orientation
Sonoma State University

Administrative Professionals Day

Inspired by “The Office”



NOMA Nation Orientation
Sonoma State University

National Administrative Professionals Day

Apr. 20 | 11 a.m. - 2 p.m.

THE KITCHENS

MENU

FLAME

Jim's "Big Tuna" Fried Fish Sandwich
american cheese, tartar sauce, brioche bun



POP UP

Michael Scott's Grilled Cheese Boca
havarti, mozzarella, pepper jack, sourdough



CHEF'S

Dwight's Beet Salad

ETC

Fun Jell-O Creations

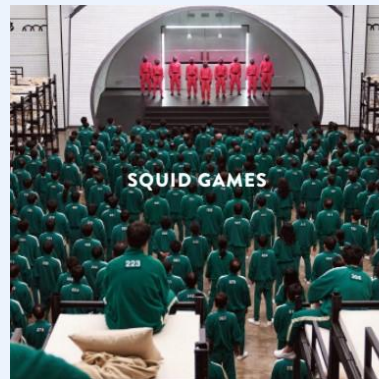
SLICE

Alfredo's Pizza Café
variety of pizza inspired by Scranton's favorite pizza place



AJIACO COLOMBIANO
colombian chicken and potato soup

AREPAS CON QUESO (CORN PANCAKE)



PASSPORT

BRAND | RESTAURANTS

THE "GLASS BRIDGE GAME"
choose the correct mac & cheese or eliminate your taste buds



"RED LIGHT GREEN LIGHT" MEETS "MARBLES"
cilantro pesto or spicy romanesco spaghetti and meatballs



"HONEYCOMB SUGAR GAME"
our version with sugar cookies



CHEF'S
DEMONSTRATION KITCHEN

CHEESY SCRAMBLED EGGS

if you want to be like Mike, top yours with maple syrup



ELEVEN'S EGGO WAFFLES WITH MRS. BUTTERWORTH'S SYRUP
make yours into the "Hopper triple-decker EGGO extravaganza" by using the toppings at the concession stand



NANCY AND JONATHAN'S POTATO HASH

BREAKFAST SAUSAGE



NOMA Nation Orientation
Sonoma State University



VEGETARIAN



VEGAN



DAIRY



FISH



GLUTEN



GLUTEN FREE



NUTS



SHELLFISH



SESAME SEED



EGG



WHEAT



SOY

Executive Chef Don Cortes

Spring Semester

- February - Lemon Shrimp Risotto
- March - Indian Butter Chicken
- April - Chimichurri Steak



NOMA Nation Orientation
Sonoma State University



COOKING CLASS FT.

**Chimichurri
Steak with Grilled
Caesar Salad**

WITH EXECUTIVE CHEF
DON CORTES

**April 9
3:00 - 4:00 p.m.
at Chef's in The Kitchens**

In our classes, you will learn new techniques to help you in the kitchen all while having a hands-on experience in a fun environment.

For more info and to sign up,
visit: culinary.sonoma.edu/events

Classes are limited to 10 people

THE KITCHENS



SEAWOLF DECISION DAY



Lobo's

- Campus pub that is a favorite meetup spot serving up pizza, apps, and more.
- Events including trivia nights, etc.
- Mobile Ordering



NOMA Nation Orientation
Sonoma State University



Sip

- Signature coffee shop featuring Starbucks classics and tasty grab-and-go items
- Mobile Ordering



Toast

- Convenient Location
- Grab and Go Selection
- Coffee & Tea



NOMA Nation Orientation
Sonoma State University



Weyden + Brewster

- Virtual Kitchen
- Mobile Ordering Pickup Area



Grubhub Campus

- Campus Money
- Order from Anywhere
- Virtual Stores



NOMA Nation Orientation
Sonoma State University

Avoid the line!

Order from your favorite on-campus restaurants
for pickup with Grubhub campus dining



Meal Plans

Get A Plan That Fits YOUR Schedule



Seawolf All Access
+150 Dining Dollars a Semester
7 days a week all access



Weekday All Access
+ 75 Dining Dollars
5 days a week all access (Mon. - Fri.)



Daily Plans
Once per day, 7 days a week
or once per 5 days per week (Mon. - Fri.)



Premier or Prime Blue Plans
20 or 50 visits per academic year



NOMA Nation Orientation
Sonoma State University



**Culinary
Services**
Sonoma State
University



Eat Well with a Meal Plan

Enjoy an all-you-care-to-eat experience
with options for everyone at The Kitchens!

Buying a Meal Plan Makes Sense:



It Provides High-quality Food



It's Convenient



It Saves You Money



It Gets You Access to Events



It Helps Create Connections

Sign Up Online:

culinary.sonoma.edu/meal-plans



How do I purchase a meal plan?

You can always visit the Seawolf Service Center in Salazar
Or

Log-in to your SSU account and click on 'Payments' to find meal plan options

For more information on meal plans visit: culinary.sonoma.edu/meal-plans



Come work with us!

Open with

Working for CULINARY SERVICES is a recipe for success!

We offer

- Free food.** Enjoy a meal with your shift, on us!
- Flexible schedules.** Because being a student comes first.
- Skills building.** Gain experiences that look good on a resume.

Pay starting at \$17.75... with advancement opportunities!

Learn the job skills that will support your career, wherever it may take you.

Apply on Handshake Today!


Culinary Services
Sonoma State University



NOMA Nation Orientation
Sonoma State University



Ask Me Anything Virtual Events

- Tuesday, June 18th - Disability Services for Students and Culture of Care (**recording available online**)
- Tuesday, June 25th - Doing Business at SSU: Seawolf Service Center and Financial Aid (**recording available online soon**)
- Tuesday, July 9th - Living and Dining on Campus: REACH and Culinary Services
- Tuesday, July 16th - Your Student's Academic Success
- Tuesday, July 23rd - University Store, Wolfbucks & What to Expect Next



NOMA Nation Orientation
Sonoma State University

NOMA NATION ORIENTATION WEEK OF WELCOME 2024!

On Campus Move In-Day

Thursday, August 15th

Parent and Family Reception

Thursday, August 15th @ 3pm; Wine Spectator Center

Orientation and Week of Welcome

Friday, August 16th - Monday, August 19th

Seawolf Family Weekend

October 4-6, 2024

Seawolf Siblings Weekend

February 21-23, 2025

Check out the orientation.sonoma.edu for more details.