



***ASK ME ANYTHING:
SEAWOLF SUMMER SUCCESS SERIES***

**LEARNING & ACADEMIC RESOURCE CENTER
(LARC)**



NOMA Nation Orientation
Sonoma State University

Who We Are

LARC is the central resource for student-to-student academic support on campus. Located on the first floor of the University library, we offer both in-person and remote services.

LARC has FREE programs that can help students...

- ★ Enhance reading and writing skills with individual writing tutoring.
- ★ Review subject matter content with 1-on-1 tutoring & group tutoring.
- ★ Succeed in a challenging course by attending Supplemental Instruction (SI) sessions.



NOMA Nation Orientation
Sonoma State University





What We Offer

Tutorial Program

- Provides free peer tutoring in over 50 courses each semester.

Writing Center

- Provides free peer writing tutoring for academic and non-academic work.

Supplemental Instruction Program

- Provides group study sessions for students enrolled in a challenging course.

FUN FACTS:

- The LARC employs 75+ peer educators.
- We support 2,000 students every year!



NOMA Nation Orientation
Sonoma State University

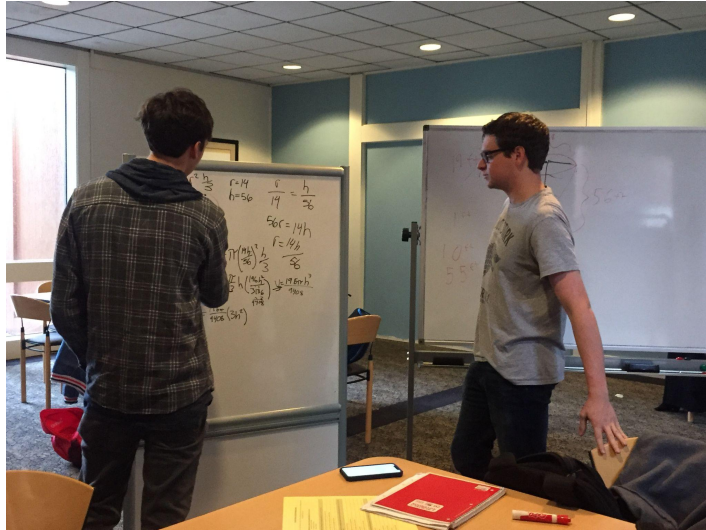
Supplemental Instruction (SI)

SI is an academic assistance program that provides weekly, peer-led group study sessions for students taking historically difficult courses.

- ★ The study sessions are collaborative, and offer students a chance to ask questions, and explore topics more deeply
- ★ SI sessions also help students prepare for midterms, quizzes, and other exams.



Tutorial Program



DROP IN MATH TUTORING is also available throughout the week.

The Tutorial Program also supports embedded tutoring in computer science, geology, electrical engineering, and more!

Our Tutorial Program and MESA peer tutors provide support for math, sciences, and more!

In a Tutoring Session, students can:

- ★ Review course content
- ★ Work through difficult problems
- ★ Develop note taking & study skills
- ★ Practice for exams
- ★ Increase their confidence as a student

Writing Center



Our peer writing tutors can help students with every step of the writing process, from understanding prompts to polishing their final drafts. Along the way, they can also help with:

- ★ Planning and organizing writing tasks
- ★ Composing resumes, scholarship letters, personal statements, etc.
- ★ Citation conventions and formatting
- ★ Growing as writers & academics
- ★ Developing written communication skills that will help them in their future careers





ENGL 99T

Writing Support for Fall 2024

Engl 99T is a 1-unit, Credit/No Credit course* that gives you a reserved weekly tutoring session with a peer-tutor in the Writing Center - no class time involved, just tutoring.

Students can bring in reading & writing from ANY class. And it can be at ANY stage of the writing process, from prompt to finished essay. **And, it is open to ALL students at SSU!**

Just sign up for the class, then contact us to make appointments that work with *your* schedule. You will work with the same tutor each week, at the same time, on the same day.

Interested in
ENGL 99T?

Sign up for class
#1543 by
Sept. 4, 2024

*Please note: Engl 99T is credit/no credit and does **not** count towards your GE units, but it **will** count towards total units for financial aid and scholarships.

**SONOMA
STATE
UNIVERSITY**

LEARNING & ACADEMIC
RESOURCE CENTER

Students can easily access tutoring through their Student Portals!

We also recommend that:

- ★ Students bring homework to drop-in math sessions - they can ask questions/get help as they go!
- ★ Students should watch for embedded tutors & SI Leaders to introduce themselves in classes.

Online Services

Welcome Writing Center larcdesk! ([not larcdeskw?](#))



NOMA Nation Orientation
Sonoma State University

Where to Learn More

Visit the LARC webpages: larc.sonoma.edu

Here, students (& you) can find lots of information!

- ★ How to make an appointment with our step-by-step guide
- ★ Information about each of our three programs, including FAQs
- ★ Students can get to know our tutors a little ahead of time by checking out our staff profiles (“Meet Our LARC Staff”)
- ★ Our newsletter → “The Latest at LARC”
- ★ Applications & info for “Working in the LARC”!
- ★ We also offer resources including campus information, video tutorials for navigating Canvas (& more), and all of our Writing Center handouts!



NOMA Nation Orientation
Sonoma State University

LARC Home

LARC Mission Statement

The Latest at LARC

PROGRAMS

Drop-In Math

How to Make an Appointment

MEET OUR LARC STAFF

GWAR

FAQs

Resources

Working in the LARC

LARC Student Staff Handbook

And Finally...

The LARC strives to be an inclusive, safe space for all students on campus. We value collaboration, creativity and communication. Our staff and peer educators welcome you and will be your ally -- as a person, student, and academic at SSU.

Follow us on social media!



NOMA Nation Orientation
Sonoma State University



@ssularc



**ASK ME ANYTHING:
SEAWOLF SUMMER SUCCESS SERIES**

Academic Advising



NOMA Nation Orientation
Sonoma State University

Overview

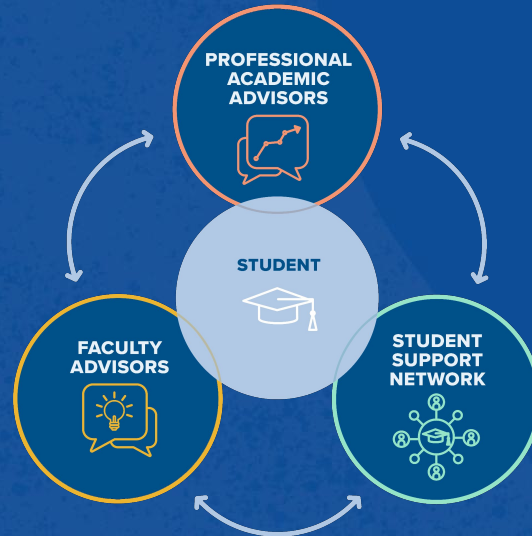
Academic advising is an ongoing, multifaceted, developmental process which is integrally related to the rest of the educational experience and is designed to provide the necessary tools, information, and support to enable students to take responsibility for:

- Developing educational plans compatible with personal, academic, and professional goals
- Meeting institutional and degree requirements
- Preparing for a life of change, challenge, individual fulfillment, active citizenship, and public service



Team Approach

We take a shared, collaborative, and student-centered approach to academic advising via a complementary partnership between Faculty Advisors, Professional Academic Advisors, and our Student Support Network.



NOMA Nation Orientation
Sonoma State University

Who is my Team?

In most cases, undergraduate students are assigned both a Faculty Advisor and a Professional Academic Advisor throughout their studies. These assignments are generally based on various factors, such as:

- Affiliation with a designated special program or population
- Declared major and/or concentration
- Number of units completed
- Alpha-sort by last name



NOMA Nation Orientation
Sonoma State University

Faculty Advisors' Role

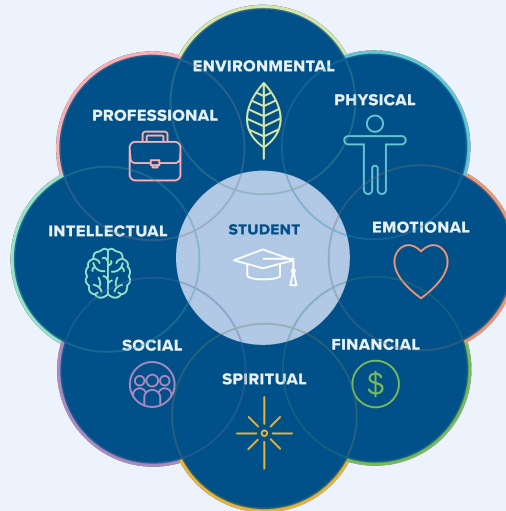
Academic advising is part of the additional professional responsibilities of faculty. Faculty Advisors predominantly support students with academic advising for majors/minors, as well as credentials and certificates. This includes, but is not limited to, overall graduation requirements; internships, research, and field experience; relevant co-curricular opportunities; and career and graduate school mentorship.



NOMA Nation Orientation
Sonoma State University

Student Support Network

The Student Support Network is a holistic support system that is academic advising-adjacent. This collection of resources and services is intended to support various dimensions of your wellness. Each resource and service is well-versed in the work of other departments and accountable to a unified vision of student success.



NOMA Nation Orientation
Sonoma State University

Students' Role

Students are expected to accept ultimate responsibility for their decisions, academic performance, course selection, educational pathway, and graduation timeline. This includes taking ownership of exploring and clarifying their values, skills, and abilities, as well as their personal, academic, and professional goals. Students should seek opportunities to get involved, enrich their educational experience, and build connections within our campus community. We are a relatively small campus that values advisor-to-student and instructor-to-student ratios. We are relational. Leverage that by making connections and building relationships!



NOMA Nation Orientation
Sonoma State University

Villagers' Role

Communicate, listen, validate, and then offer support without pushing it. Talk about their concerns regarding this transition and their expectations for your involvement. They will likely struggle at some point, but they will also figure things out if we let them. Provide the scaffolding to prepare them to belong, problem-solve, manage stress, ask for help, practice independence, and handle the most likely challenges without you. Help them process big decisions, while gradually dialing-down the guidance as they become more competent and confident. Write, text, call, send care packages - let them know you care. Be available without hovering. Encourage them to seek advising early/often, attend instructors' office hours, ask questions, utilize campus resources, be open/honest about their needs, read their email, get involved, try new things, and explore. Be a supportive passenger, we'll be an attentive navigator, and let's toss the student the keys and let them drive.



Professional Advisors' Role

Professional Academic Advisors predominantly support students with general advising. This includes, but is not limited to, empowering decision-making, goal-setting, and self-authorship; course registration; academic advising tools and resources; graduation requirements within General Education; academic standing and academic probation; and university policies, processes, and related forms.



NOMA Nation Orientation
Sonoma State University



general education



wayfinding & referrals



policies & processes



major & minor exploration



overcoming barriers



holistic support



advising tools & resources



graduation requirements



academic standing



belonging & connectedness



decision making & goal setting



course registration



NOMA Nation Orientation
Sonoma State University

Examples of General Advising



Learning Outcomes

- 1 Seeking Advising Early & Often
- 2 Developing Self-Authorship
- 3 Navigating Course Registration
- 4 Identifying Degree Requirements
- 5 Locating Policies, Processes, & Forms
- 6 Maintaining Good Academic Standing
- 7 Leveraging Agency & Meaning
- 8 Owning Your Graduation Timeline
- 9 Integrating Enrichment & Support
- 10 Connecting the Dots



Academic Requirements Report

SONOMA STATE UNIVERSITY MYSSU

Career: Undergraduate	Fall 2021	Last term registered: Fall 2006
Program: Undergraduate	Fall 2020	Academic Standing: Good Standing
Plan: Psychology (BA)	Fall 2020	Overall GPA: 3.093
Graduation Status: Not Applied		Sonoma GPA: 3.500

General Information

The Academic Requirements Report (ARR) lists and checks degree requirements. Plans (majors and/or minors) and Sub-Plans (concentrations, tracks, options, etc.) must be officially entered into a student's record via a Change of Major Form for requirements to display.

[How to Read the Academic Requirements Report \(ARR\)](#)

[Academic Requirements Report Update Form](#)

[Apply to Graduate](#)

WARNING: In-progress courses (yellow diamond) will appear in all unit totals. Unit totals may double count in-progress repeated courses until grades are posted. Let your advisor know if you are repeating a course.

Degree Audit Icons	Course Icons
Requirement Met	SSU Course Graded
Met with In-Progress Work	SSU Course In-Progress
Planned	Planned
Requirement Not Met	Transfer/Test Credit
Exception Made	What-If Course

Sonoma State University | Undergraduate

This report last generated on 03/24/2022 2:24PM

[Collapse All](#) [Expand All](#)

▶ GENERAL UNDERGRADUATE DEGREE REQUIREMENTS	■
▶ LOWER-DIVISION GENERAL EDUCATION REQUIREMENTS	■
▶ UPPER-DIVISION GENERAL EDUCATION REQUIREMENTS	■
▶ SEAWOLF STUDIES GRADUATION REQUIREMENTS	■
▶ PSYCHOLOGY (BA) (RG385-14)	■
▶ UNASSIGNED COURSES (RG 2193)	■

[Return](#)



Student Toolkit in Canvas



Academic Advising & Course Regis...

Academic Advising & Course ...

Default Term SIS



NOMA Nation Orientation
Sonoma State University

Privacy of Student Records

We are committed to maintaining the privacy of student records that are considered confidential in accordance with state laws, federal laws, and University policy. This includes the Family Educational Rights and Privacy Act (FERPA). Student information is categorized as either directory/public information, education records, or non-education records. These categories help determine the limitations on the release/access of protected information. To some degree, all students, regardless of age, have the ability to customize what information may be shared. For example, if a student would like to facilitate the release of protected information to a designee for a set period of time they may use the [Authorization to Release](#) page in their MySSU. We recommend letting the student learn to manage their own affairs and decide/initiate what information/access they'd like to share, if any.



Advising During Orientation

Academic advising is provided during the Orientation sessions. Major advising is provided by Faculty Advisors and general advising is provided by Professional Academic Advisors. If a student attends an in-person Orientation, the advising/registration will happen that afternoon in a computer lab. If a student attends a virtual Orientation, the student will need to set up advising appointments with both their major department and a Professional Academic Advisor within their virtual Orientation window. Prior to attending Orientation, students need to have their MySSU username/password, set-up their Multi-Factor Authentication with Duo, and review the Student Toolkit in Canvas.



Advising During the Academic Year

Academic advising is made available and accessible throughout students' college career. For current students, this means having access to advising at regular, reasonable intervals. We encourage students to seek advising early and often, rather than just around registration periods. While the structure and delivery of academic advising may vary slightly across campus to account for the distinctiveness of programs/departments (e.g., drop-ins vs. appointments, scheduling via LoboConnect vs. email, etc.), students should be able to easily identify how, and from whom, they can access academic advising. We encourage students to be proactive, open, and honest about how they are doing and what they need to be successful. Take the initiative - meet with an advisor, develop a relationship, and find a partner in helping you make the most of your college experience.



Links to Materials Referenced

- [Where to Seek Advising](#)
- [Student Support Network](#)
- [Academic Advising & Course Registration - Student Toolkit](#) in Canvas
- [Resources for Students](#)
- How to [Schedule an Appointment](#) in LoboConnect
- University Policy on [Academic Advising](#)
- [Setting up Multi-Factor Authentication](#) using Duo
- [Using the Authorization to Release Page](#)
- Orientation Questions? Click [here](#) for contact information
- Advising & Registration questions? Click [here](#) for contact information



First- and Second-Year Transition (FAST) Program

Ricardo Calderon, Coordinator
calderor@sonoma.edu



NOMA Nation Orientation
Sonoma State University

Our Mission

- Provide new students college-credit courses and related programming to facilitate their success.
- The FAST Program connects students to academic and co-curricular resources, programs and opportunities on campus and our community



NOMA Nation Orientation
Sonoma State University

What is an FLC?

First-Year Learning Communities (FLCs) are yearlong courses offered **only** to first-year students.

They are yearlong specifically designed to give GE credit and help first-years succeed with their **transition** to college.



Why FLCs?

- ❖ Benefits include:
 - **Completing multiple General Education (GE) areas at once**
 - Building a close-knit community with faculty, staff, student leaders, and other first-year students
 - **Gain access to programming around transition and student success**
 - Be prepared to successfully transition into our Sonoma State community!



Enrollment in FLCs

- ❖ **Most students have been pre-enrolled into an FLC, some based on their major**
- ❖ If students need clarification on which FLC they're pre-enrolled in, connect with their Academic or Faculty Advisor
- ❖ **If a major does not list any FLCs, it could be that the major course requirements conflict with FLC course offerings. Don't worry, students will still get an amazing first year experience and be connected with various resources!**
- ❖ Stay enrolled for the whole year to get the most out of the course and experience!





Thank you!

Coordinator: calderor@sonoma.edu

Program email: fastprogram@sonoma.edu



NOMA Nation Orientation
Sonoma State University

Ask Me Anything Virtual Events

- Tuesday, June 18th - Disability Services for Students and Culture of Care
- Tuesday, June 25th - Doing Business at SSU: Seawolf Service Center and Financial Aid
- Tuesday, July 9th - Living and Dining on Campus: REACH and Culinary Services
- Tuesday, July 16th - Your Student's Academic Success
- Tuesday, July 23rd - University Store, Wolfbucks & What to Expect Next



NOMA Nation Orientation
Sonoma State University

NOMA NATION ORIENTATION WEEK OF WELCOME 2024!

On Campus Move In-Day

Thursday, August 15th

Parent and Family Reception

Thursday, August 15th @ 3pm; Wine Spectator Center

Orientation and Week of Welcome

Friday, August 16th - Monday, August 19th

Seawolf Family Weekend

October 4-6, 2024

Seawolf Siblings Weekend

February 21-23, 2025

Check out the orientation.sonoma.edu for more details.